



T7/T7+ IRIS AM II Upgrade Kit



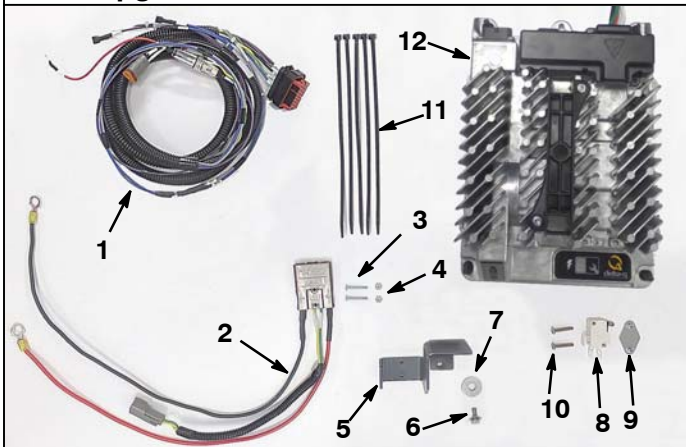
This kit includes the necessary parts to add battery charger communication functionality to machines equipped with IRIS telemetry technology. See the **IMPORTANT INSTALLATION NOTICE** before installing kit.

INSTALLATION INSTRUCTIONS:

Installation Time: 2 Hours

Special Tools Required: None

AM II Upgrade Kit Contents



Ref.	Part No.	Description	Qty.
1	1074466	Harness, Telem	1
2	1075477	Connector, Harness, Charger, Off-board	1
3	06923	Screw, Pan, Phl, m3x0.50x25, 4.8	2
4	579211	Nut, Hex, Lock, m3x0.50, nl,ss	2
5	1230748	Bracket, Retrofit, AM II Connector [T7]	1
6	1034731	Screw, Hex, m6x1.00x16, sems,ss	1
7	1017218	Washer, flat, 0.32B 1.99 .12, ss	1
8	611005	Switch, interlock	1
9	1013705	Plate, Thread, Switch, m3 nut	1
10	06922	Screw, Pan, Phl, m3x0.50x20,4.8	2
11	130773	Tie, Cable, Nyl, 11.0L, .14W, 3.0 Max. D	5
12	1230312	Charger, IC- 650, 100- 240V, Off- Board	1

NOTE: Charger power cord not included, use cord from previous charger.

IMPORTANT INSTALLATION NOTICE:

For IRIS models manufactured after February 2017, the AM II charger connector harness (Ref. 2) and charger (Ref. 12) are the only kit parts required for this upgrade. The new kit AM II charger connector harness (Ref. 2) easily installs in the same location as the original red battery connector wire assembly. The machine's existing telemetry harness is pre-equipped with an open connector to accept the new charger connector harness. Carefully follow the kit installation instructions with this in mind.

When installing the complete IRIS kit with the addition of the AMII upgrade kit, two telemetry harnesses (Ref. 1) will be provided. One from each kit. Only one harness is required for both kits.

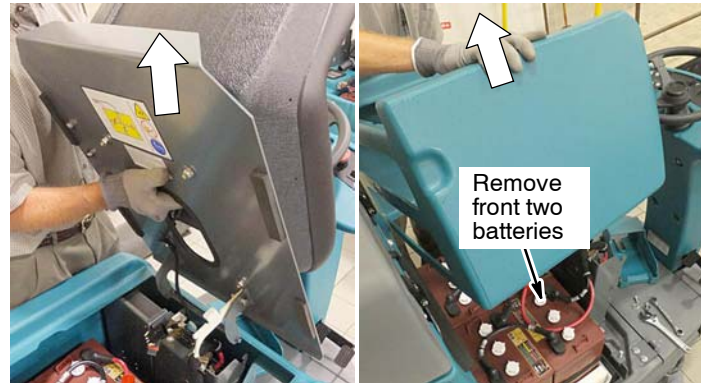
PREPARE MACHINE FOR KIT INSTALL:

1. Park machine on level surface, turn off machine, remove key, and set parking brake if equipped.
2. Disconnect battery cable from machine.

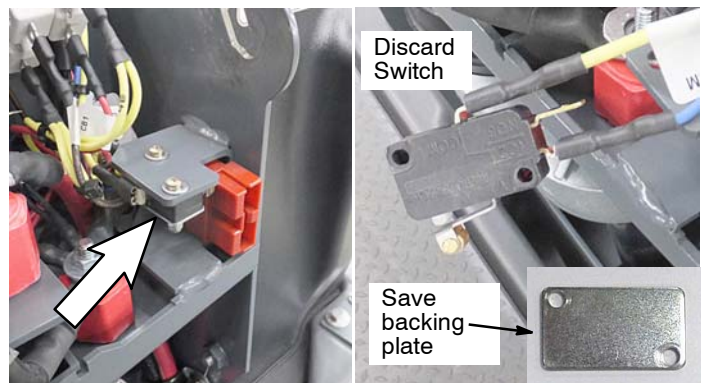
WARNING: Always disconnect battery cables from machine before working on electrical components.



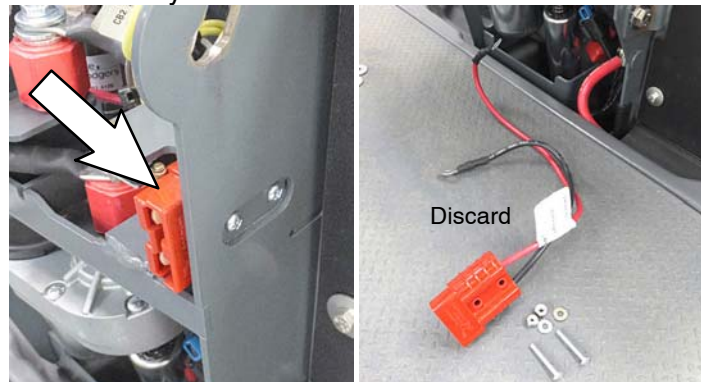
3. Remove seat, battery compartment shroud and the front two batteries from machine.



4. Remove the charger connector interlock switch from machine and discard. Save backing plate for reuse.

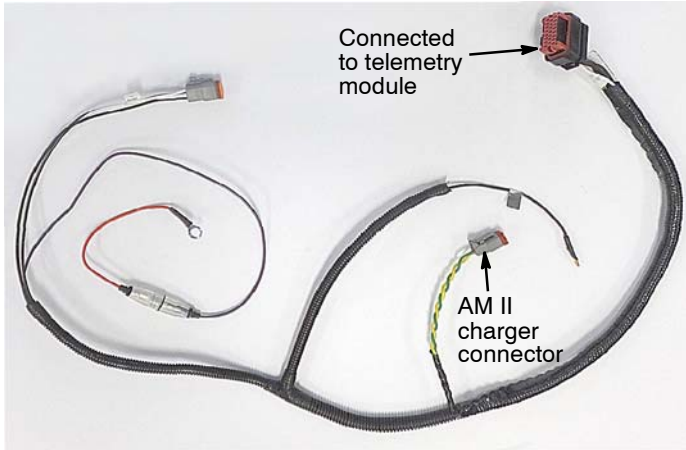


5. Remove the existing charger connector wire assembly from machine and discard.



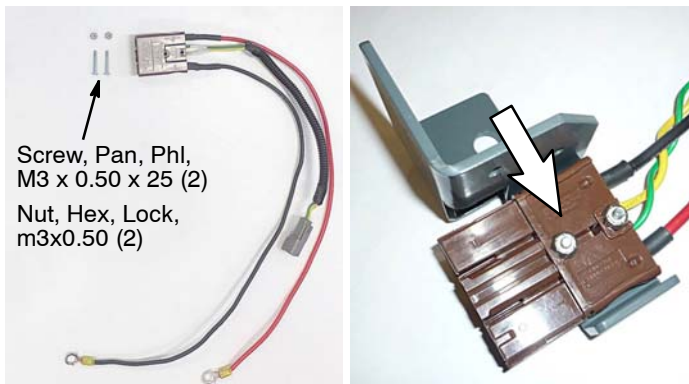
6. Remove the existing telemetry harness from machine and discard. Do not remove any other parts associated with telemetry system.

NOTE: For IRIS models manufactured after February 2017, the removal of the existing telemetry harness is not required. The existing telemetry harness is AM II kit compatible. To confirm, the harness includes an open AM II charger connector as shown below.

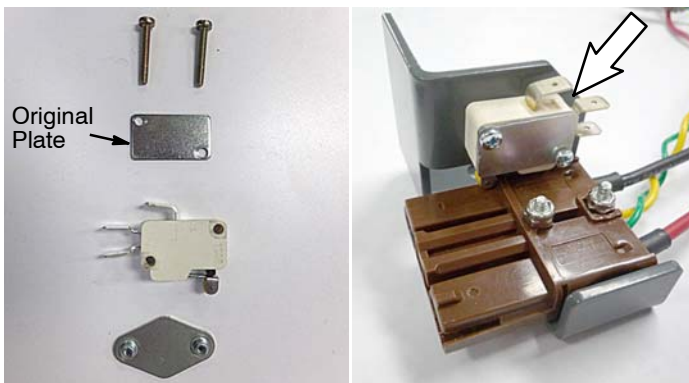


AM II UPGRADE KIT INSTALLATION:

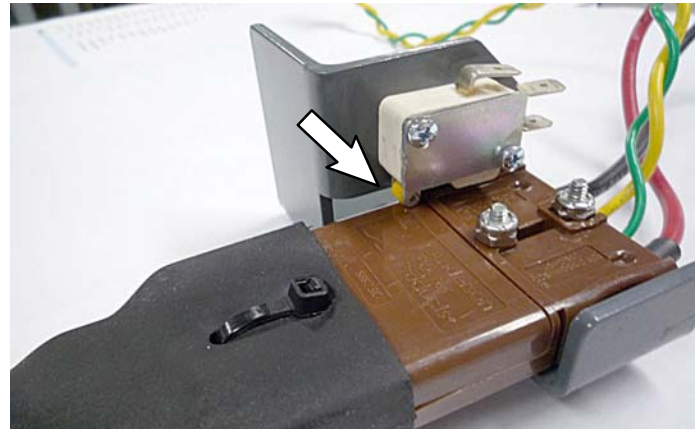
1. Connect the new AM II charger connector harness to the retrofit charger connector bracket as shown.



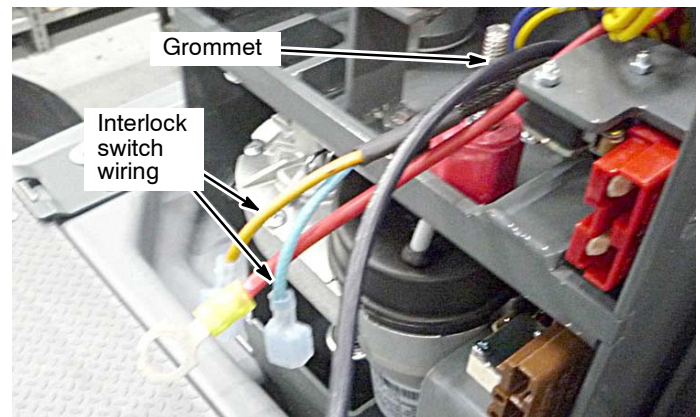
2. Connect the new interlock switch to the retrofit bracket with hardware as shown.



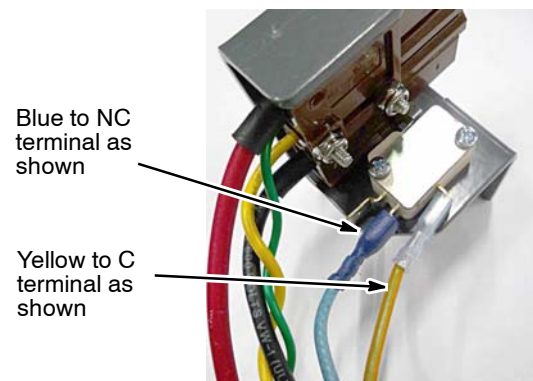
3. Plug the charger into the connector and adjust the charger interlock switch to ensure proper operation.



4. Route the interlock switch wiring down through grommet.



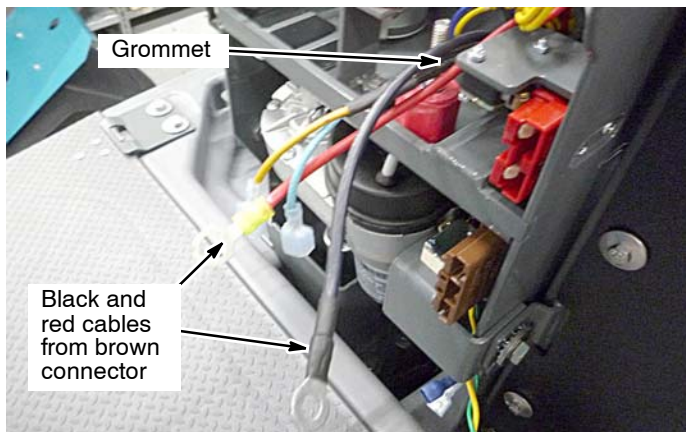
5. Reconnect the interlock switch wires to the new interlock switch as shown.



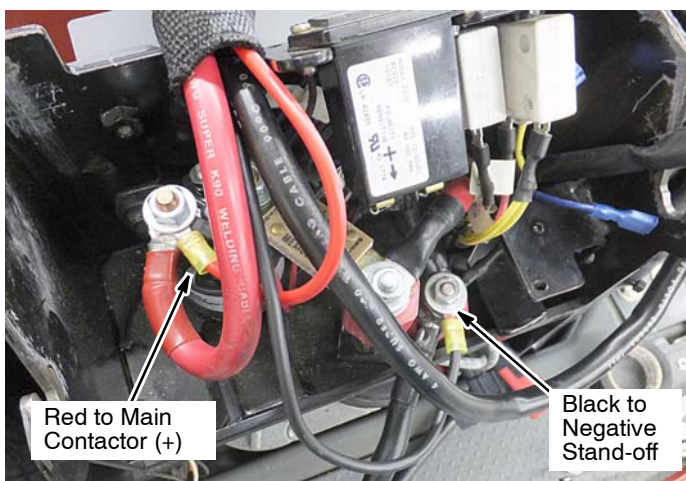
6. Mount the retrofit bracket assembly to machine with hardware as shown.



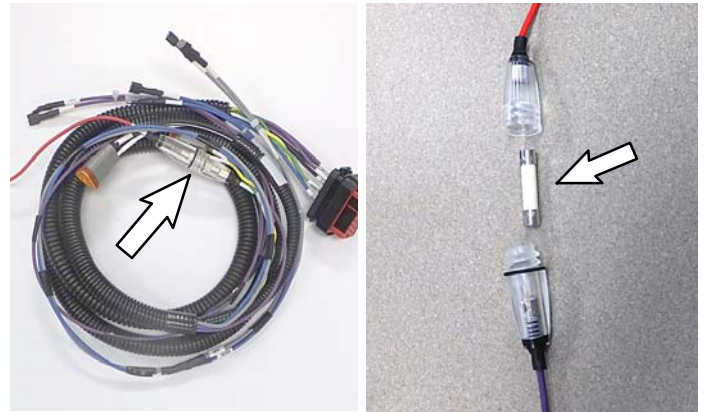
7. Route the black and red cables from the new brown charger connector up through grommet as shown.



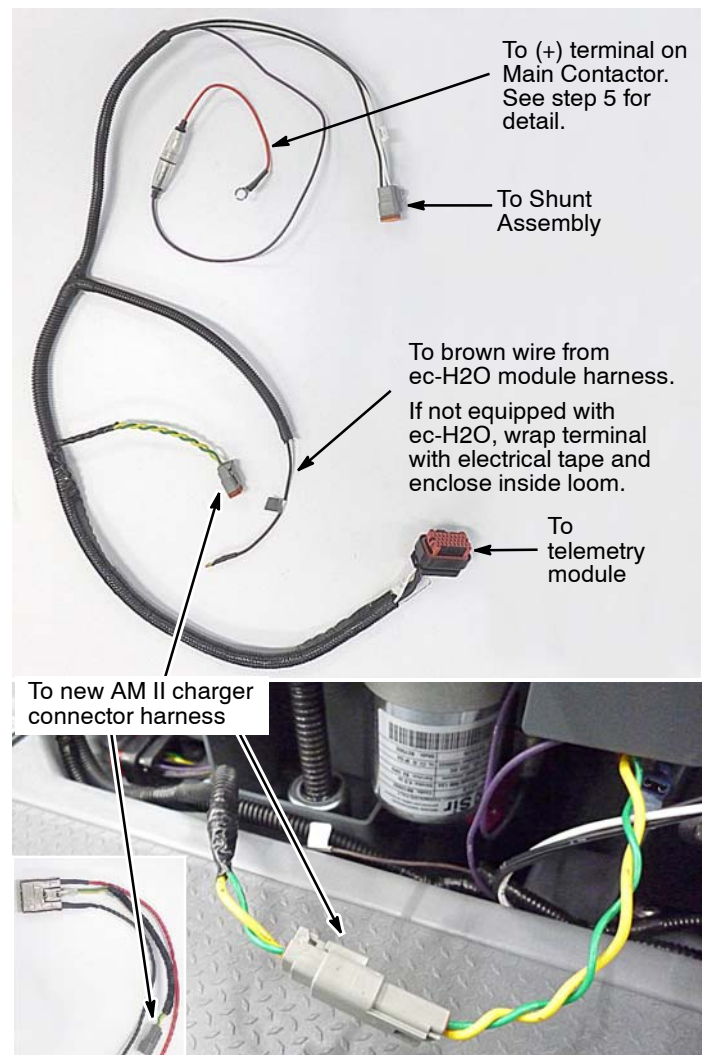
8. Connect the red cable to the (+) terminal on main contactor and the black cable to the negative stand-off.



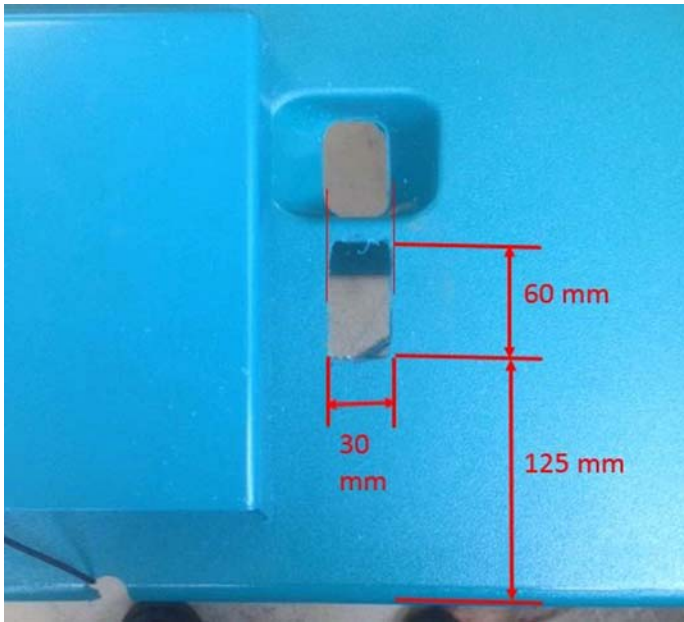
9. **IMPORTANT:** To prevent possible damage to telemetry system during install, remove the in-line fuse from the new telemetry harness. Do not misplace fuse.



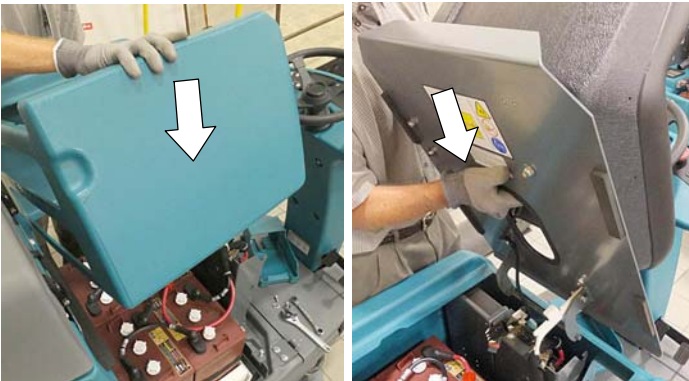
10. Install the new telemetry harness. Follow the same routing path as old harness. Connect the new telemetry harness to the following components. Secure harness with cable-ties.



11. Carefully cut a hole into the battery shroud as described.



12. Reinstall the batteries, battery compartment shroud and seat. Reconnect battery cables.

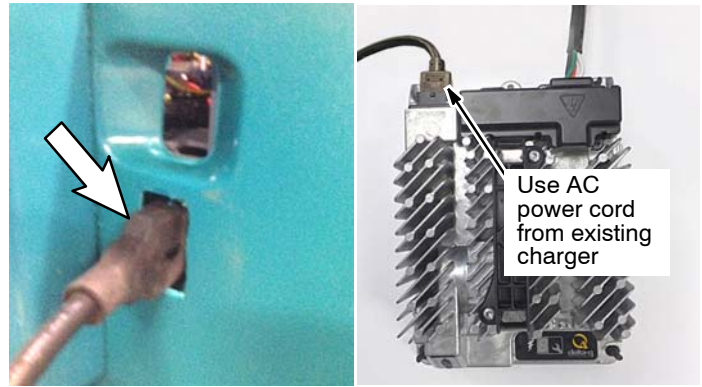


13. Reinstall fuse into telemetry harness.



TEST KIT FOR PROPER OPERATION:

1. Plug the new charger into the telemetry battery charge connector.
2. Use existing AC power cord from old charger and plug new charger into power outlet. Wait up to 30 seconds for charger to start. A yellow lightning bolt will illuminate on the charger to confirm the batteries are in the charge cycle.



3. Turn key on to confirm the charger interlock switch disables the machine during the charge cycle. An audio alarm (horn) will beep nine times repeatedly indicating that the charger is plugged into machine which also disables the machine. **If the alarm fails to beep, check the interlock switch for proper installation. Check wire connections and roller alignment. Repeat step.**
4. After testing is confirmed, contact the Tennant technical service department as instructed below.

AM II UPGRADE KIT CHARGER PROFILE SETTING:

IMPORTANT: To properly report battery charging data via IRIS, contact Tennant technical service department to set the charging profile to your specific battery type. Please have battery type information available when contacting service.

IRIS TELEMETRY KIT ACTIVATION:

If the complete IRIS telemetry system was installed with the addition of the AM II upgrade kit, call the Tennant technical service department to activate the IRIS module and to set the charging profile. The IRIS telemetry system must be activated to complete the install. Please have machine serial number and IRIS module SIM number available when calling for activation.

NOTE: When batteries reach end of life and must be replaced, Tennant highly recommends that the same battery type be used to continue to maximize the machine performance. In the event a battery with a different amp hour (AH), type (flooded, AGM, Gel), or manufacturer is selected for replacement please contact Tennant technical support department for assistance in determining the feasibility of the replacement batteries and selecting the correct charging profile.